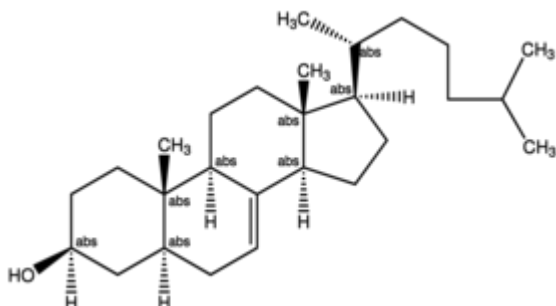


5a-Cholest-7-en-3β-ol 25 mg SIGMA



Codice Articolo: C3652-25MG

Breve descrizione del prodotto:

5a-Cholest-7-en-3B-ol,

Informazioni aggiuntive:

- CAS Number: 80-99-9
- Molecular Formula: C₂₇H₄₆O
- URL Link: <https://www.sigmaaldrich.com/US/en/product/SIGMA/C3652?context=product>
- Image
URL: https://www.sigmaaldrich.com/content/dam/sigma-aldrich/structure5/126/mfcd00056176.eps/_jcr_content/renditions/mfcd00056176-medium.png
- MSDS
Link: <https://www.sigmaaldrich.com/MSDS/MSDS/DisplayMSDSPage.do?country=DE&language=EN&productNumber=C3652&brand=SIGMA>
- Molecular Weight: 386.65
- Shipped on ICE/no ICE: STD
- SAP Pack with Pack Qty: 1X25MG
- Storage Temperature: -20C
- Prodotto padre: C3652-25MG