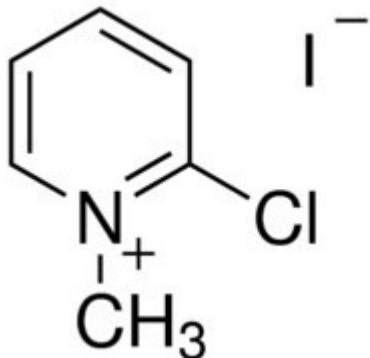


## 2-Chloro-1-methylpyridinium iodide 25 g Aldrich



**Codice Articolo:** 198005-25G

### Breve descrizione del prodotto:

2-Chloro-1-methylpyridinium iodide,97%

### Informazioni aggiuntive:

- CAS Number: 14338-32-0
- Molecular Formula: C<sub>6</sub>H<sub>7</sub>ClIN
- Purity Grade: 97%
- URL Link: <https://www.sigmaaldrich.com/US/en/product/ALDRICH/198005?context=product>
- Image  
URL: [https://www.sigmaaldrich.com/content/dam/sigma-aldrich/structure3/034/mfcd00011984.eps/\\_jcr\\_content/renditions/mfcd00011984-medium.png](https://www.sigmaaldrich.com/content/dam/sigma-aldrich/structure3/034/mfcd00011984.eps/_jcr_content/renditions/mfcd00011984-medium.png)
- MSDS  
Link: <https://www.sigmaaldrich.com/MSDS/MSDS/DisplayMSDSPage.do?country=DE&language=EN&productNumber=198005&brand=ALDRICH>
- Molecular Weight: 255.48
- Shipped on ICE/no ICE: STD
- SAP Pack with Pack Qty: 1X25G
- Prodotto padre: 198005-25G