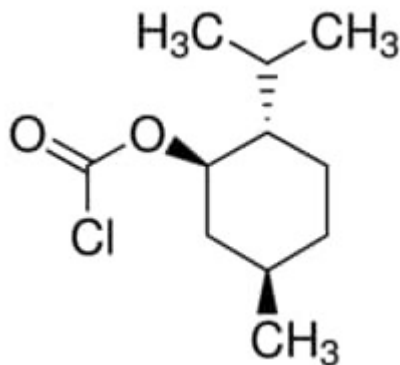


**(1R)-(-)-Menthyl chloroformate 25 g**

(1R)-(-)-Menthyl chloroformate 25 g Sigma-Aldrich

**Codice Articolo:** 245305-25G

**Breve descrizione del prodotto:**

(1R)-(-)-Menthyl chloroformate, optical purity ee: 99% (GLC)

**Informazioni aggiuntive:**

- CAS Number: 14602-86-9
- Molecular Formula: C<sub>11</sub>H<sub>19</sub>ClO<sub>2</sub>
- Purity Grade: optical purity ee: 99% (GLC)
- URL Link: <https://www.sigmaaldrich.com/US/en/product/ALDRICH/245305?context=product>
- Image  
URL: [https://www.sigmaaldrich.com/content/dam/sigma-aldrich/structure6/133/mfcd00009694.eps/\\_jcr\\_content/renditions/mfcd00009694-medium.png](https://www.sigmaaldrich.com/content/dam/sigma-aldrich/structure6/133/mfcd00009694.eps/_jcr_content/renditions/mfcd00009694-medium.png)
- MSDS  
Link: <https://www.sigmaaldrich.com/MSDS/MSDS/DisplayMSDSPage.do?country=DE&language=EN&productNumber=245305&brand=ALDRICH>
- Molecular Weight: 218.72
- Shipped on ICE/no ICE: STD
- SAP Pack with Pack Qty: 1X25G
- Storage Temperature: -2-8°C
- Prodotto padre: 245305-25G